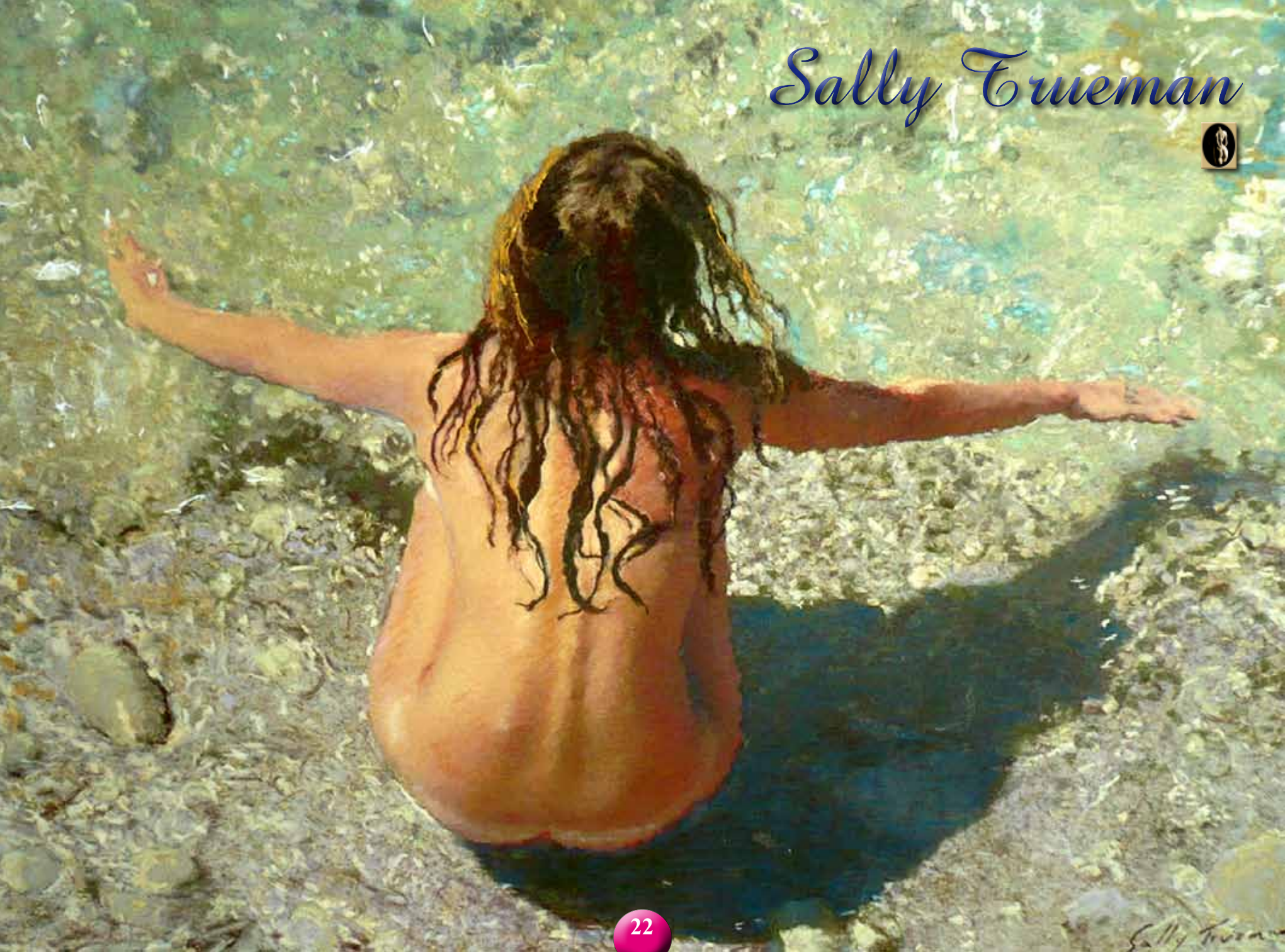


Sally Trueman

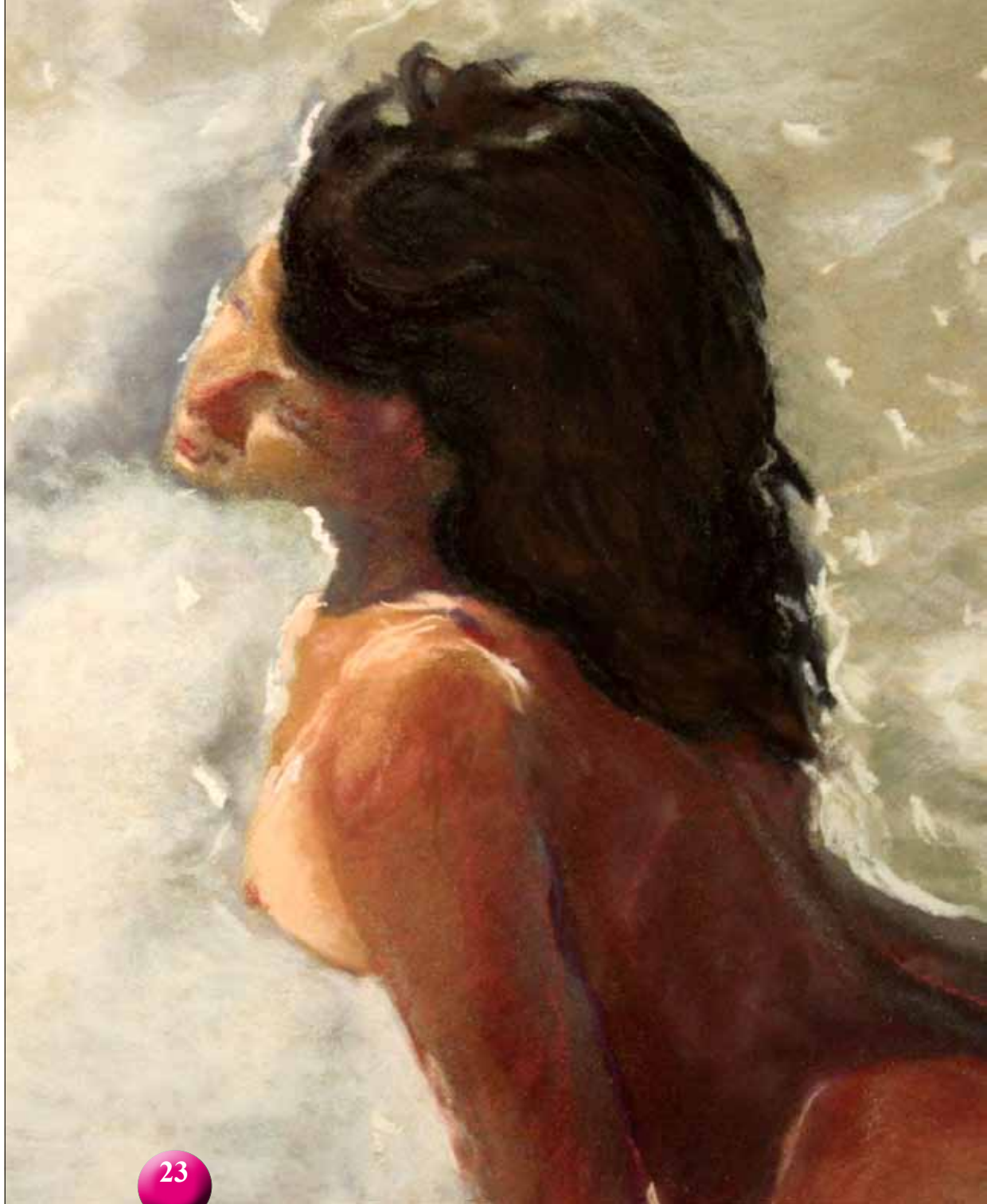


Sally Trueman

Kent

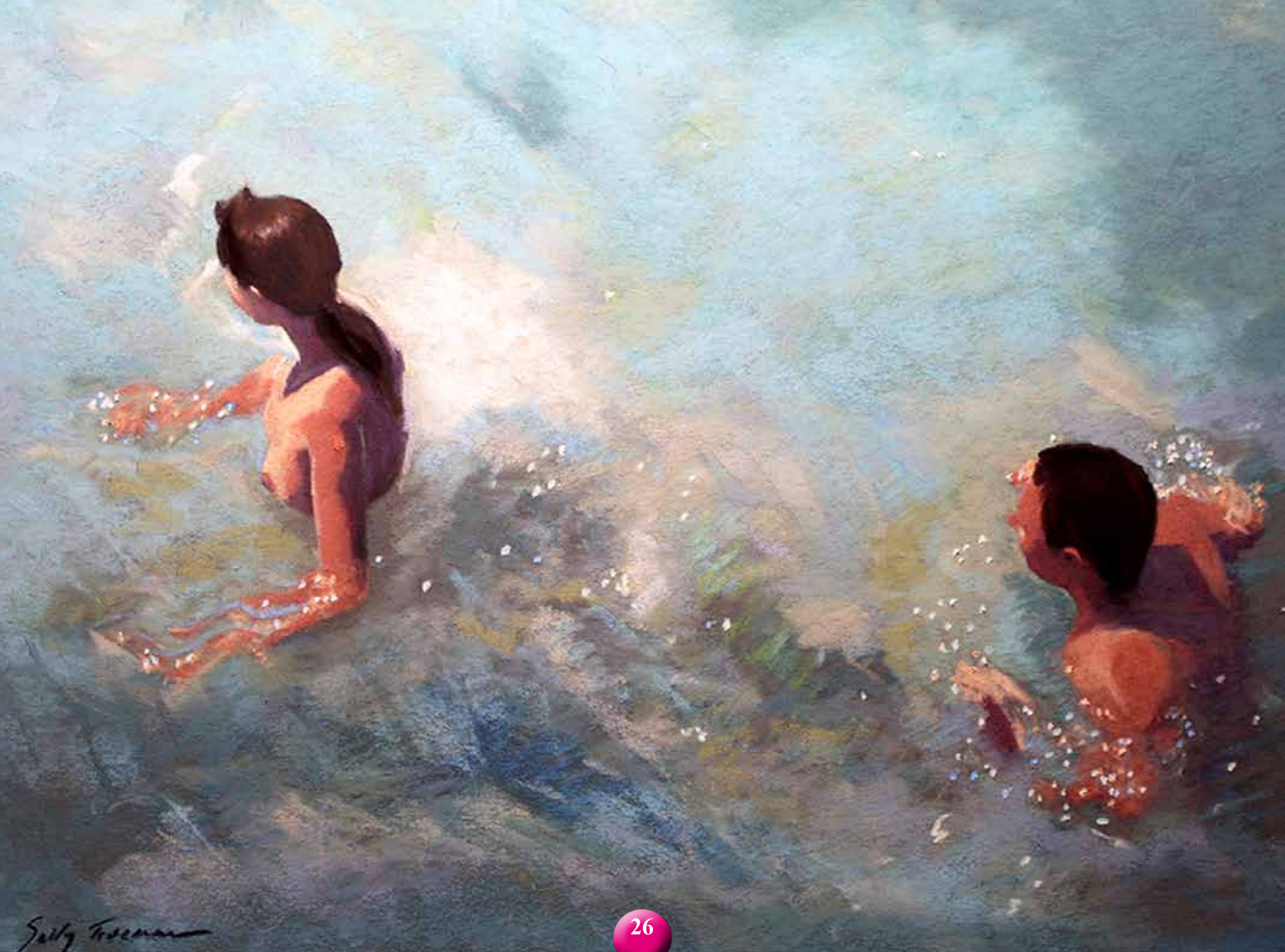
www.modernpainters.eu

Sally Trueman's work explores, through the human figure, the theme of intimacy between bodies; the familiarity and closeness of lovers; the chance meeting that turns a stranger into a confidante, set in a world in which figurative painting coexists with abstract patterns, played out with reflections of light on water. Sally's nudes are bathed in light, revealing an original imagination. Her work brings together abstract and reality in harmony, taking the viewer into a different world. In 1975 she was offered a place at Eastbourne College of Art - bored, she lasted three weeks. The same year she was offered a place at Brighton University of Art - but preferred to spend her time wandering around galleries. In a chance encounter at the Pavilion Gallery she met Royal portrait painter John Hughes-Hallett and continued her education with him until his death. Focusing at the time on portraiture, many of these works now hang in corporate and private collections worldwide. In 2000, she moved to the south of France, where she was commissioned to do a series of large canvases depicting the landscape and colour of the region. Ten years in France has had a profound influence on her style, which can be seen in her interpretation of nudes in water and the beach scenes for which she has become well-known today. Her work makes up part of the Carcassonne and the Brighton Museum collections. She has had her paintings published in a number of books and magazines.









Sally Freeman







